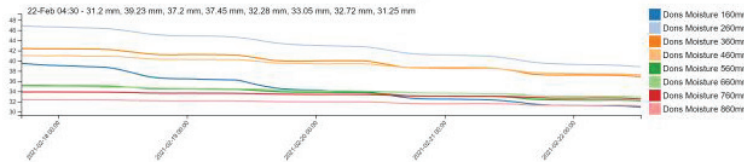




SOIL MOISTURE MONITORING

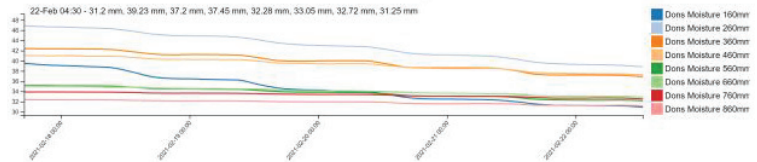
Probe 1 Separate Level Moisture

Refresh | Instant | Most Recent 30 | 1 Hour | 12 Hours | Day | Week | Month | Custom

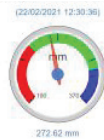
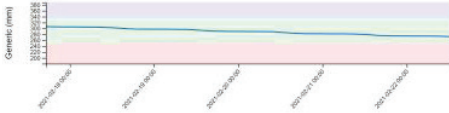


Probe 2 Separate Level Moisture

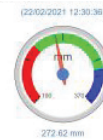
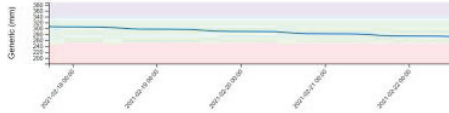
Refresh | Instant | Most Recent 30 | 1 Hour | 12 Hours | Day | Week | Month | Custom



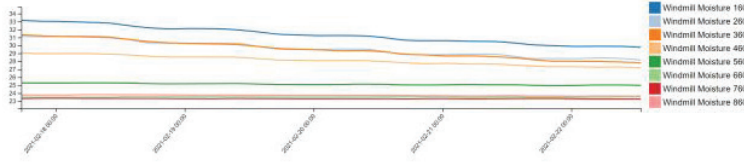
Probe 1 Summed Moisture



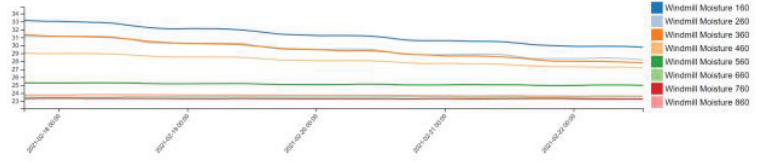
Probe 2 Summed Moisture



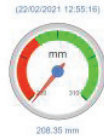
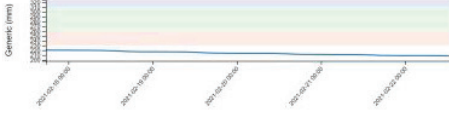
Probe 3 Separate Level Moisture



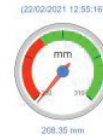
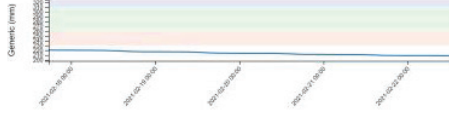
Probe 4 Separate Level Moisture



Probe 3 Summed Moisture



Probe 4 Summed Moisture



Hut Soil Moisture Probe All Depths

Hut Soil Moisture Probe All Depths

Using cellular or radio connection, soil moisture and soil temperature data can be recorded and displayed. The information provides details on the soil moisture and soil temperature readings from multiple sensors within a probe at 10cm increments. Probes are available in lengths of 40, 80, 120 and 160cm. Data is displayed to provide information on available moisture within the profile/root zone of the crop, depth of water use, rate of water use and effectiveness of rain and/or irrigation events. Used for management decisions within dryland applications and for management and timing of water applications for irrigation.