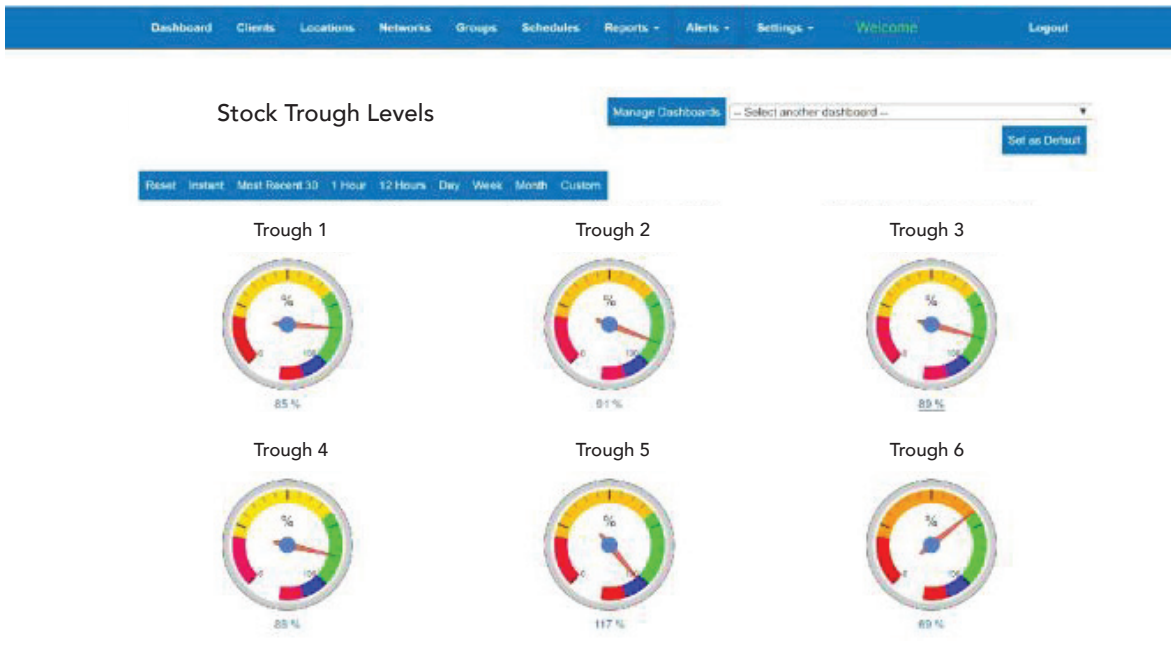


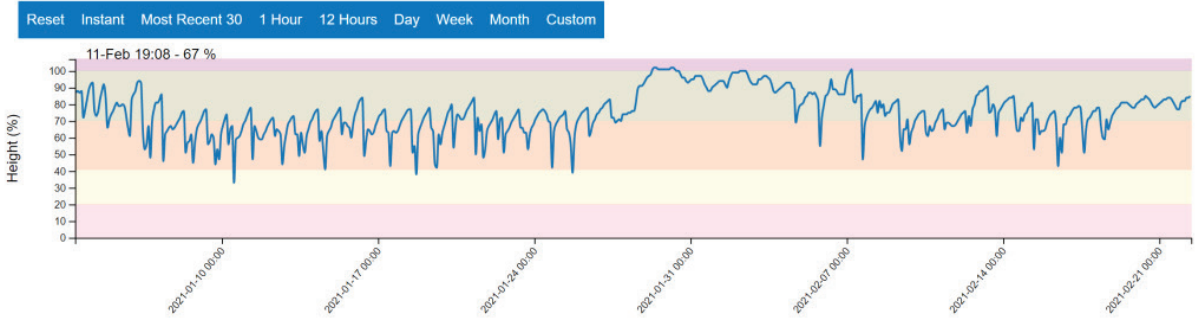


TROUGH LEVEL MONITORING



Trough 2 Level (%)

[View DataNode](#) [Edit Device](#) [Copy](#)



Radio telemetry unit reading water level sensor in troughs. Data from radio monitoring sites requires a gateway that connects to the internet via 4G, Provides remote data of water level in troughs with graphical history of data and email and/or SMS alerts on specified levels. This solution is designed for applications where there are multiple monitoring sites that are within radio range of the gateway.