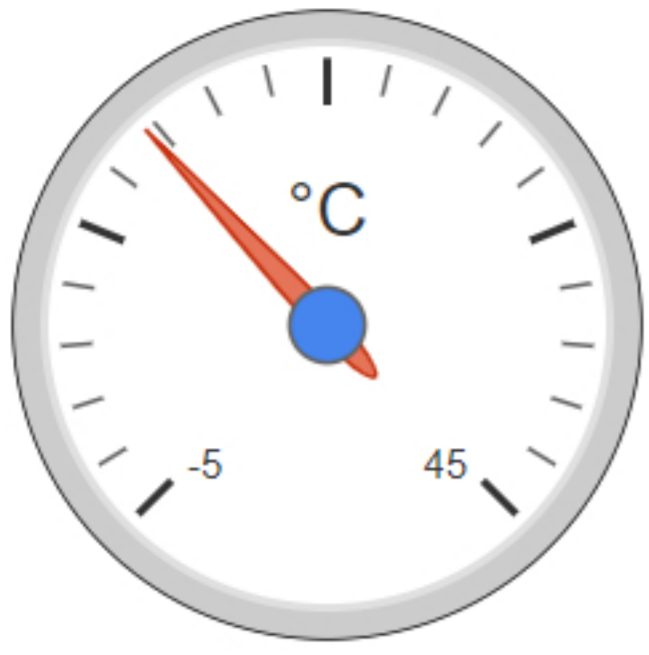


### Air Temperature

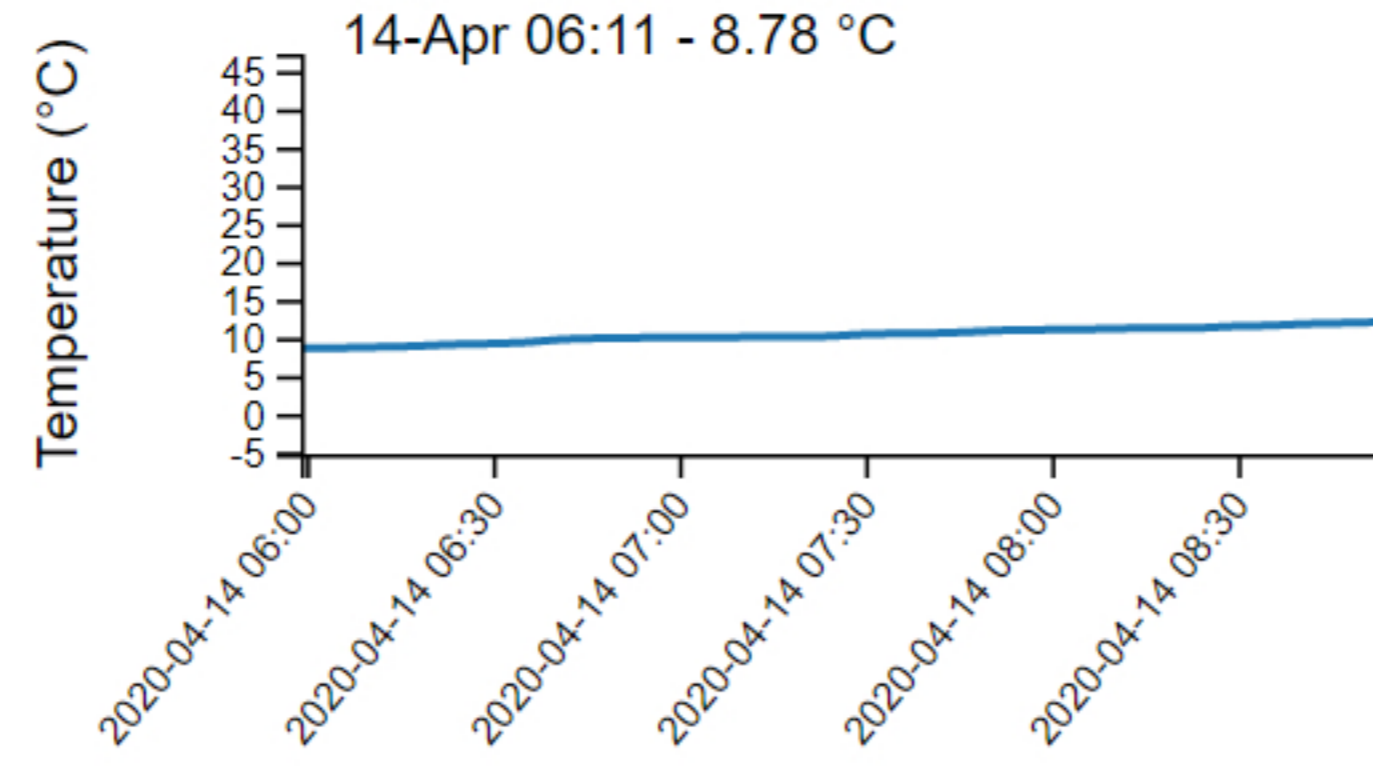
(14/04/2020 08:53:06)



12.06 °C

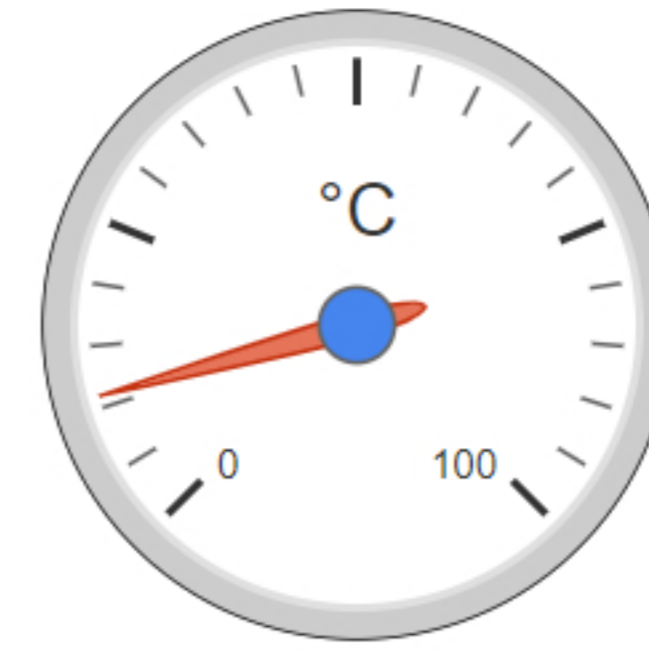
### Air Temperature

14-Apr 06:11 - 8.78 °C



### Wet Bulb Temperature

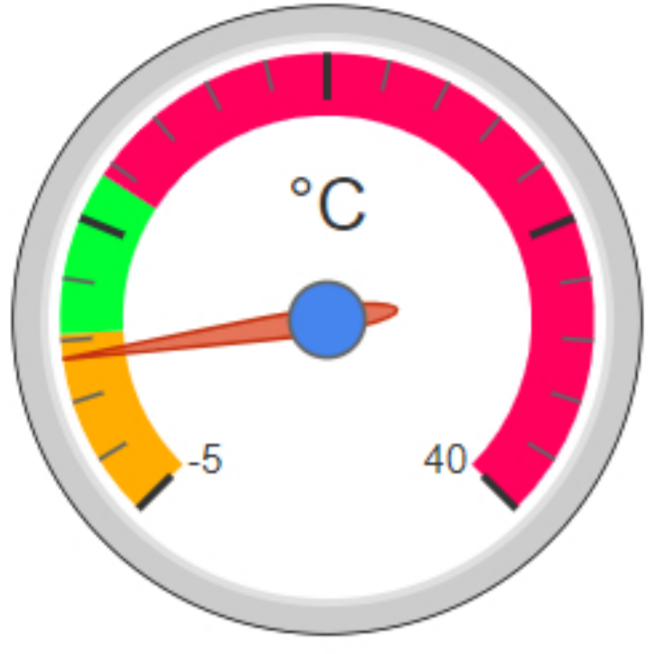
(14/04/2020 08:53:06)



10.96 °C

### Delta T

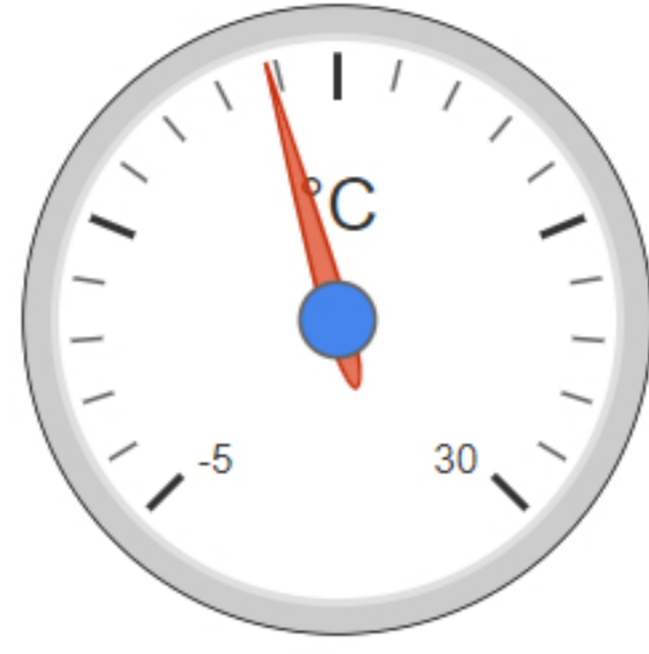
(14/04/2020 08:53:06)



1.1 °C

### Dew Point

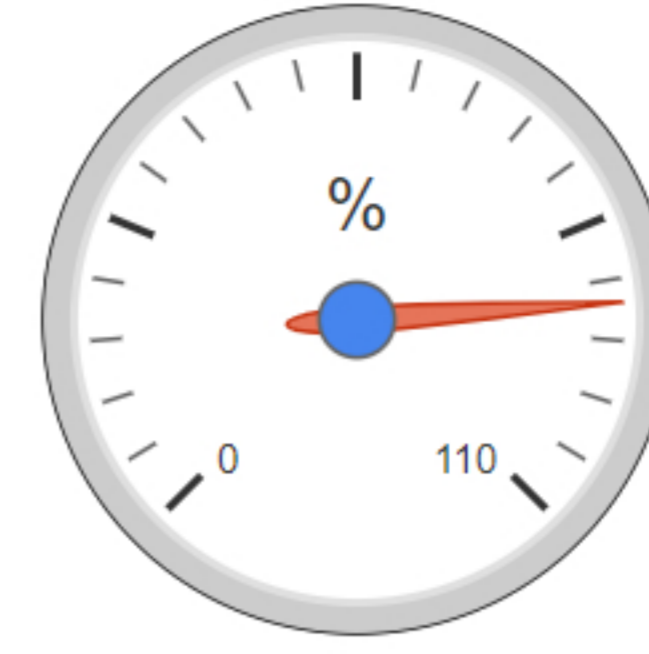
(14/04/2020 08:53:06)



10.48 °C

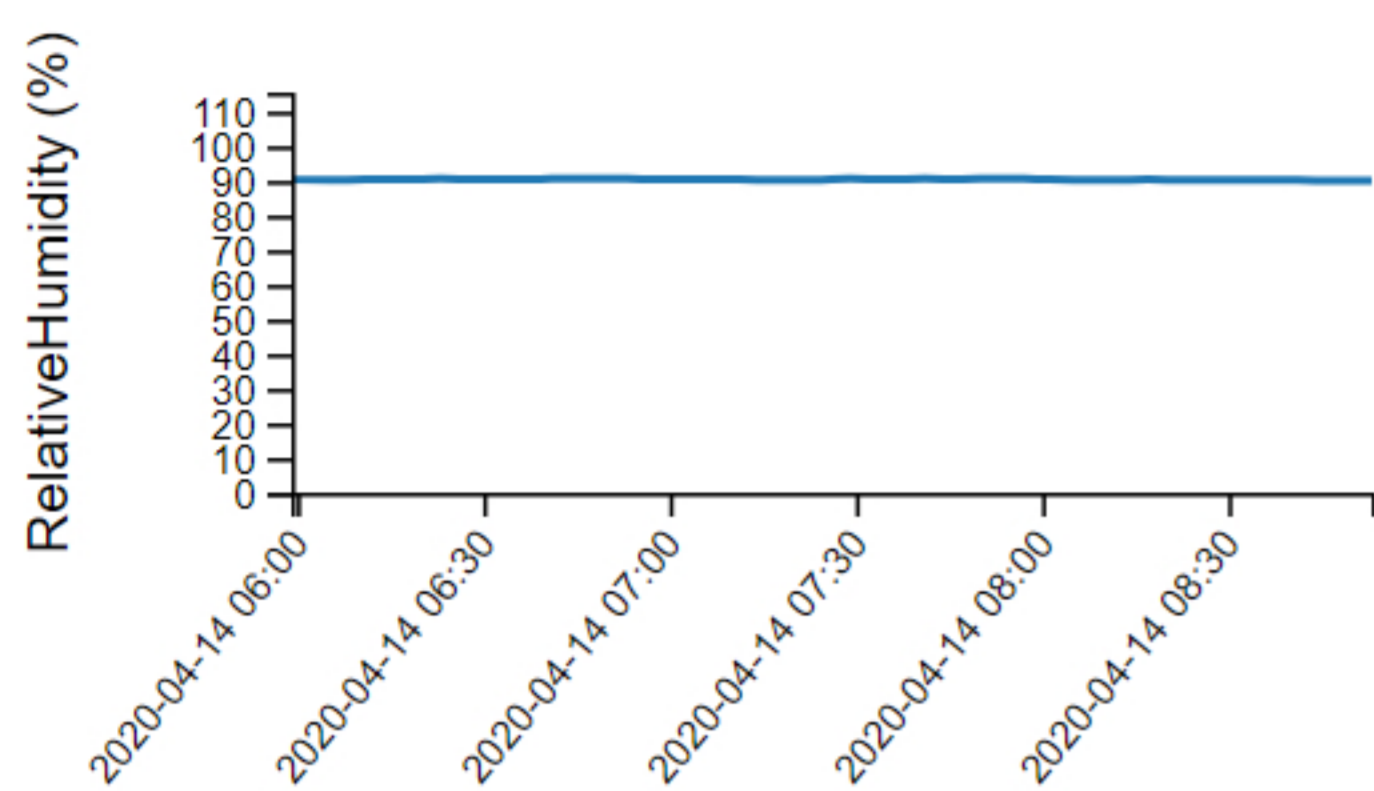
### Relative Humidity

(14/04/2020 08:53:06)



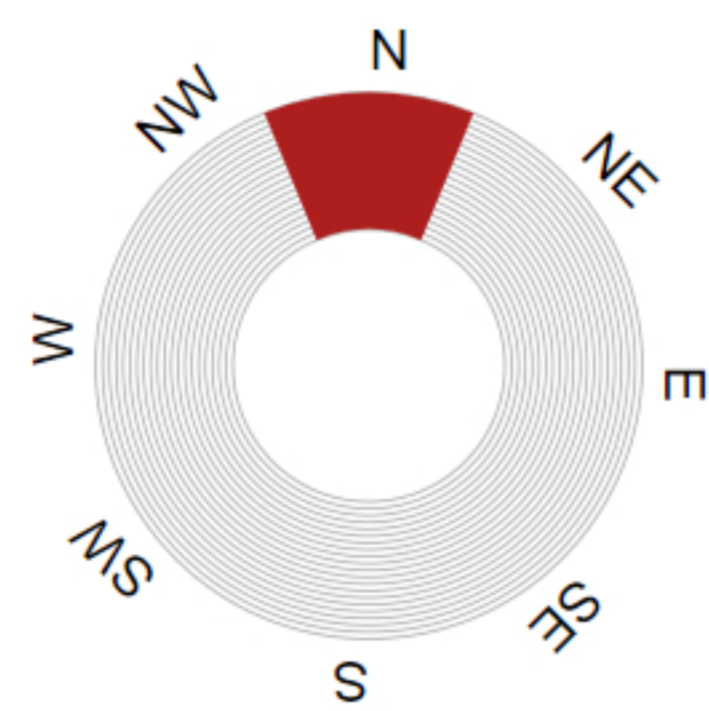
90.1 %

### Relative Humidity



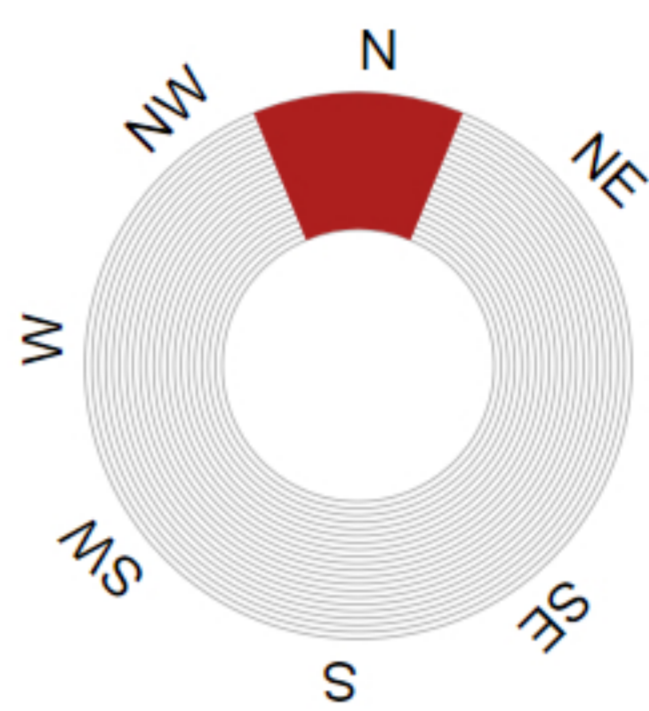
### Wind Direction

(14/04/2020 08:53:06)



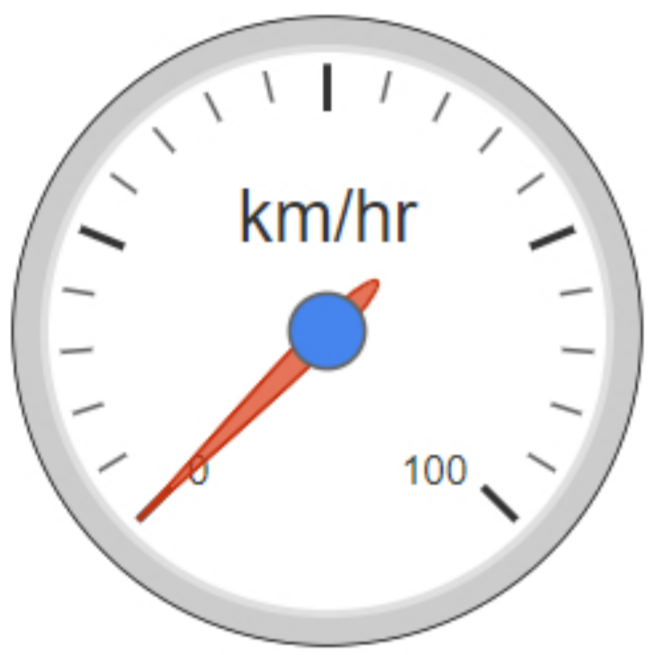
### Dominant Wind Direction

(14/04/2020 08:53:06)



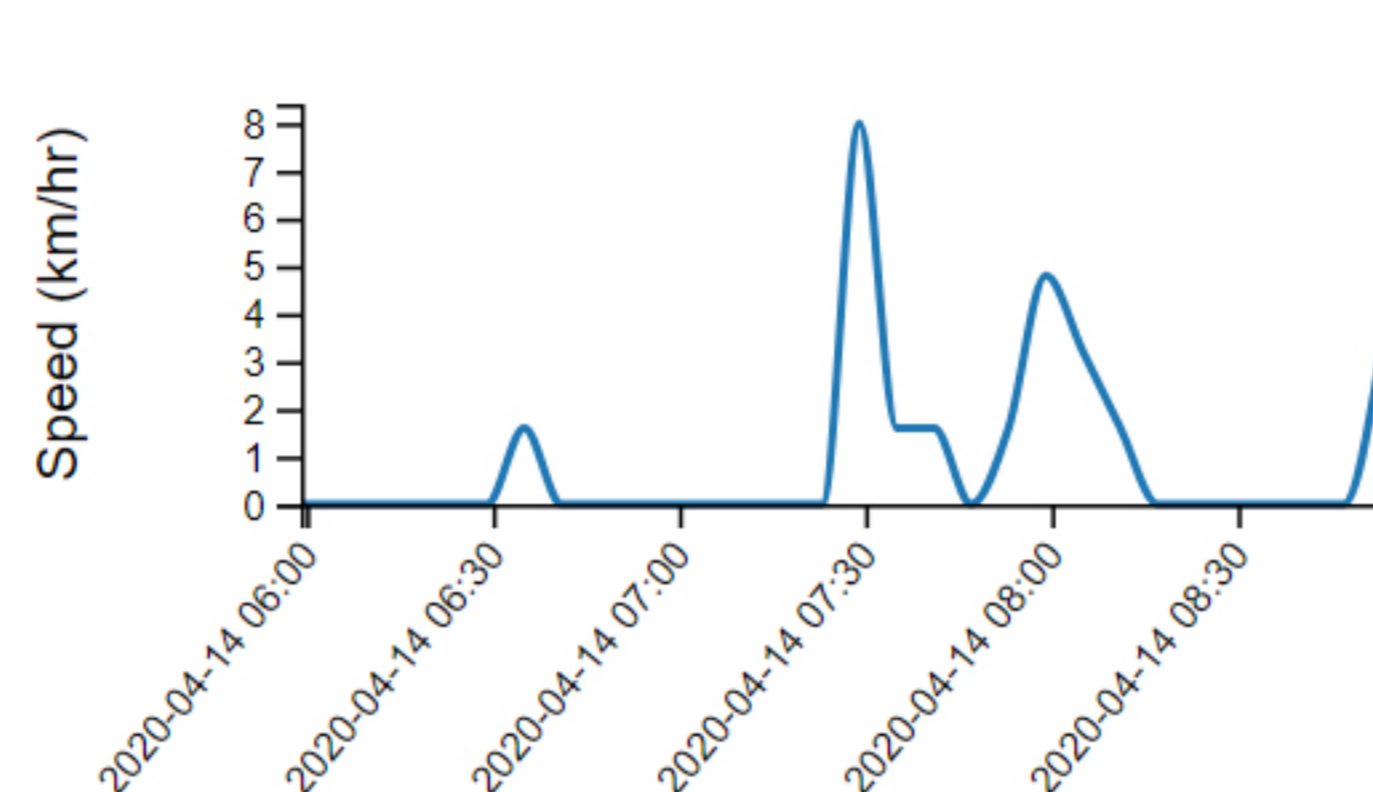
### Wind Speed

(14/04/2020 08:53:17)



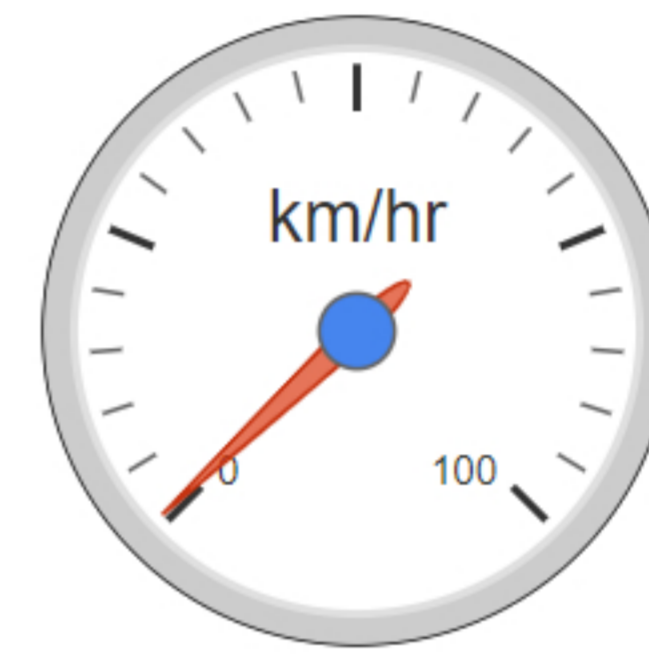
0 km/hr

### Wind Speed



### Average Wind Speed (last 10min)

(14/04/2020 08:53:06)



0.61 km/hr

### Max Wind Speed (last 10min)

(14/04/2020 08:53:06)



4.8 km/hr

### Rainfall Last hour

(14/04/2020 08:53:15)

0.00 mm

### Rainfall Since 'Status Time'

(14/04/2020 08:53:15)

1.00 mm

### Rainfall Previous Day

(14/04/2020 08:53:15)

0.00 mm

### Rainfall This Week

(14/04/2020 08:53:15)

1.00 mm

### Rainfall Last Week

(14/04/2020 08:53:15)

0.00 mm

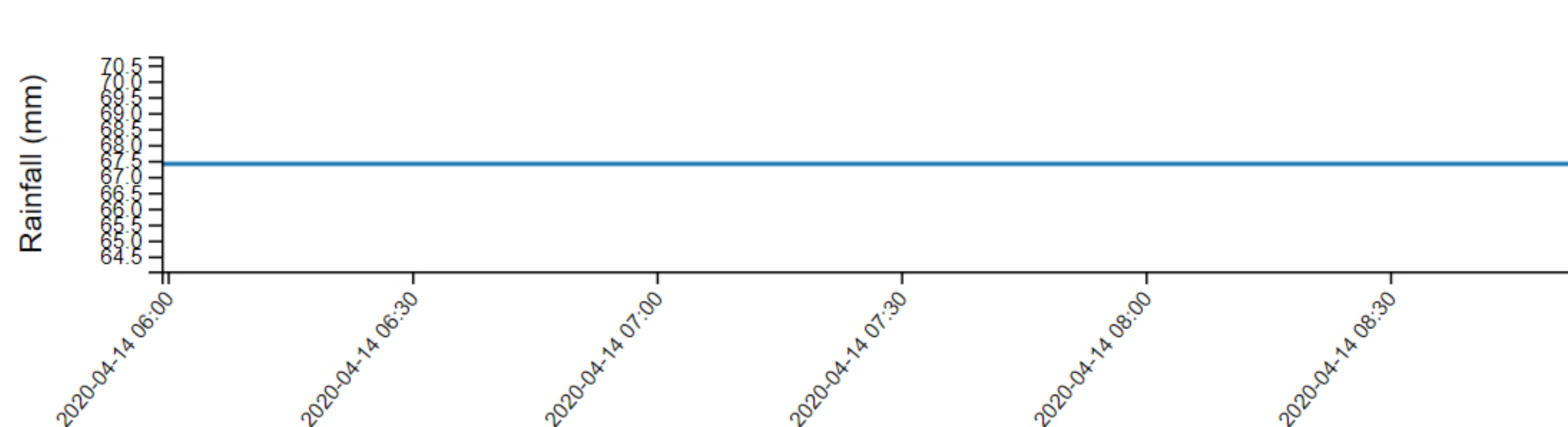
### Solar Radiation

(14/04/2020 08:53:06)

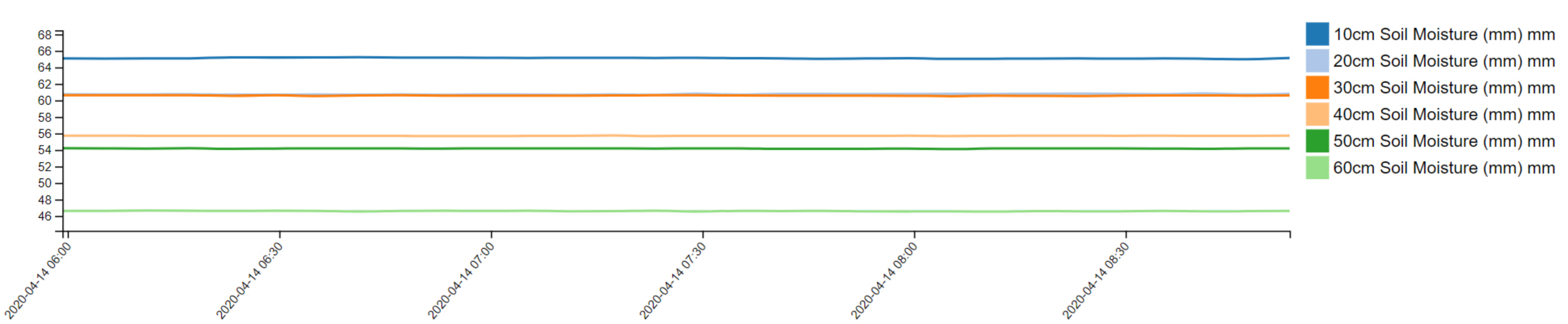


163.48

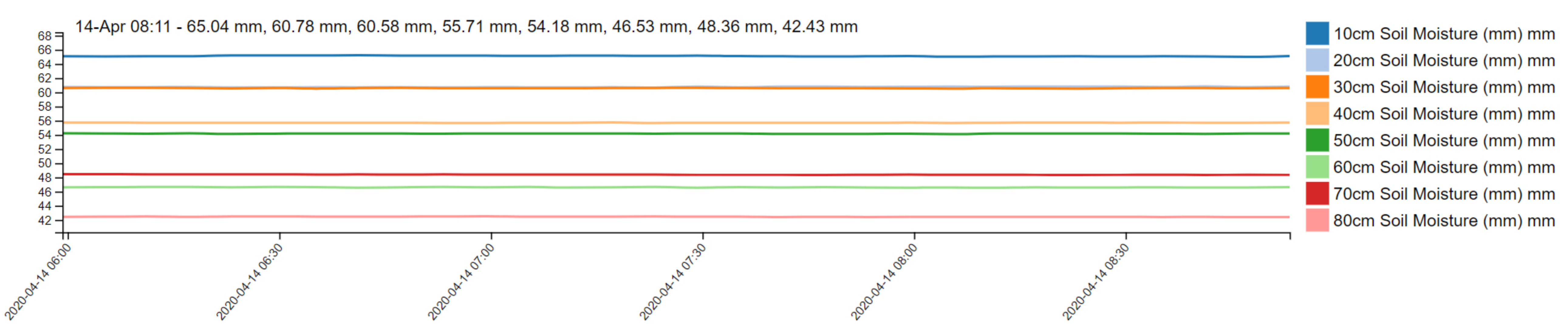
### Accumulated Rainfall



### WSFarming - Soil Moisture Probe 100mm - 600mm



### WSFarming - Soil Moisture Probe All Depths



### WSFarming - Probe Soil Temperature 100mm - 600mm

